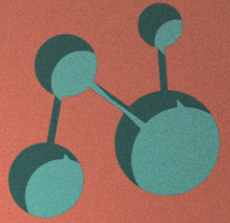
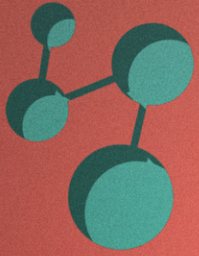


Four stylized molecular structures, each consisting of five teal spheres connected by black lines, are positioned in the corners of the image. A large, faint teal circle is centered behind the main text.

# **SMALL GROUPS**

**The Most Underutilized Tool  
in WELS Ministry**





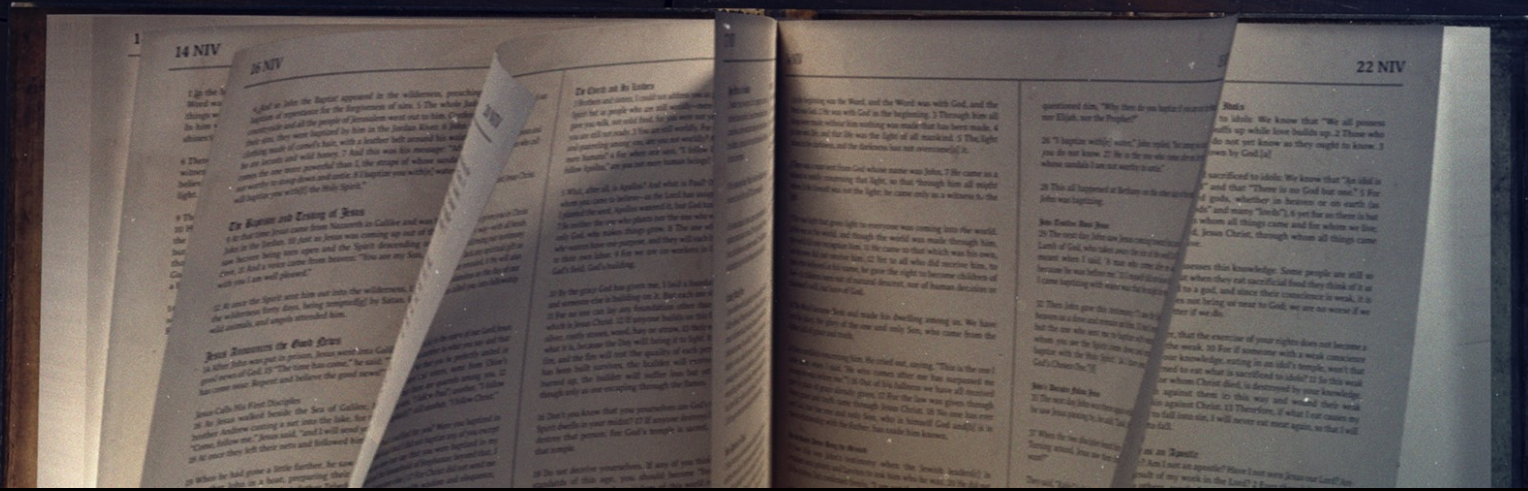
# 1) WHY?





# Matthew 28:18-20

**18** Then Jesus came to them and said, "All authority in heaven and on earth has been given to me. **19** Therefore go and make disciples of all nations, baptizing them in the name of the Father and of the Son and of the Holy Spirit, **20** and teaching them to obey everything I have commanded you. And surely I am with you always, to the very end of the age."





# Ephesians 2:19-22

**19** Consequently, you are no longer foreigners and strangers, but **fellow citizens with God's people** and also **members of his household**, **20** built on the foundation of the apostles and prophets, with Christ Jesus himself as the chief cornerstone. **21** In him the **whole building is joined together and rises to become a holy temple in the Lord**. **22** And in him you too are being built together to become a dwelling in which God lives by his Spirit.



11 So Christ himself gave the apostles, the prophets, the evangelists, the pastors and teachers, 12 to equip his people for works of service, so that the body of Christ may be built up 13 until we all reach unity in the faith and in the knowledge of the Son of God and become mature, attaining to the whole measure of the fullness of Christ.

14 Then we will no longer be infants, tossed back and forth by the waves, and blown here and there by every wind of teaching and by the cunning and craftiness of people in their deceitful scheming. 15 Instead, speaking the truth in love, we will grow to become in every respect the mature body of him who is the head, that is, Christ. 16 From him the whole body, joined and held together by every supporting ligament, grows and builds itself up in love, as each part does its work.

## Ephesians 4:11-16

22 NIV





High Church

Low Church



In my former book, Theophilus, I wrote about all that Jesus began to do and to teach 2 until the day he was taken up to heaven, after giving instructions through the Holy Spirit to the apostles he had chosen. 3 After his suffering, he presented himself to them and gave many convincing proofs that he was alive. He appeared to them over a period of forty days and spoke about the kingdom of God. 4 On one occasion, while he was eating with them, he gave them this command: "Do not leave Jerusalem, but wait for the gift my Father promised, which you have heard me speak about. 5 For John baptized with[a] water, but in a few days you will be baptized with the Holy Spirit."

6 Then they gathered around him and asked him, "Lord, are you at this time going to restore the kingdom to Israel?"

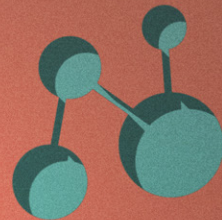
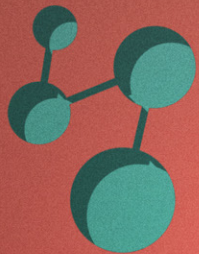
7 He said to them: "It is not for you to know the times or dates the Father has set by his own authority. 8 But you will receive power when the Holy Spirit comes on you; and you will be my witnesses in Jerusalem, and in all Judea and Samaria, and to the ends of the earth."

9 After he said this, he was taken up before their very eyes, and a cloud hid him from their sight.

10 They were looking intently up into the sky as he was going, when suddenly two men dressed in white stood beside them. 11 "Men of Galilee," they said, "why do you stand here looking into the sky? This same Jesus, who has been taken from you into heaven, will come back in the same way you have seen him go into heaven."

# Acts 1:1-11

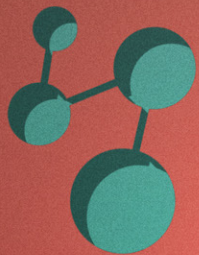




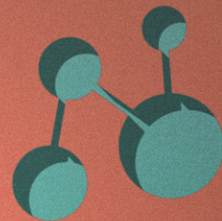
# NATURAL GROWTH INHIBITORS & NON-BIBLICAL MODELS







# 1) WHY?



1) Peer-to-Peer  
Discipling is  
COMMANDED

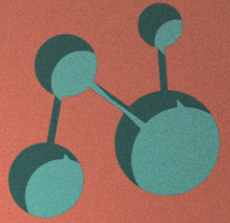
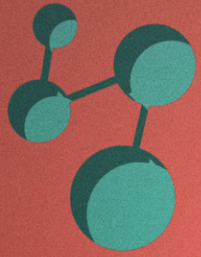
2) Peer-to-Peer  
Discipling is  
HEALTHY

3) NOT Doing  
Peer-to-Peer  
Discipling is  
PROHIBITIVE

**SMALL  
GROUPS**



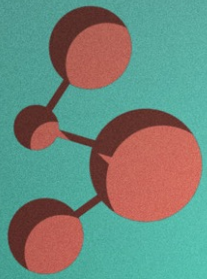




## 2) HOW?

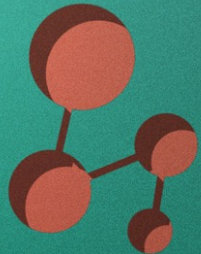
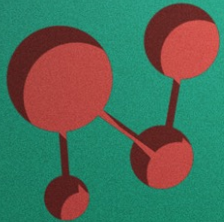






# THE SIMPLE PATH TO SMALL GROUPS

- **Materials**





18 The wrath of God is being revealed from heaven against all the godlessness and wickedness of people, who suppress the truth by their wickedness, 19 since what may be known about God is plain to them, because God has made it plain to them. (Rom. 1:18-19)



18 The wrath of God is being revealed from heaven against all the godlessness and wickedness of people, who suppress the truth by their wickedness, 19 since what may be known about God is plain to them, because God has made it plain to them. (Rom. 1:18-19)

## Worse Question

Why does Paul say pagans don't believe?

ANSWER: They suppress truth.



18 The wrath of God is being revealed from heaven against all the godlessness and wickedness of people, who suppress the truth by their wickedness, 19 since what may be known about God is plain to them, because God has made it plain to them. (Rom. 1:18-19)

### *Worse Question*

Why does Paul say pagans don't believe?

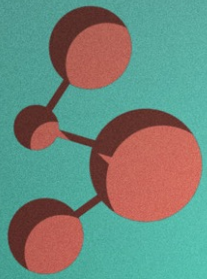
ANSWER: They suppress truth.

### *Better Question*

How does the fact that Paul says non-believers "suppress the truth" impact our witnessing?

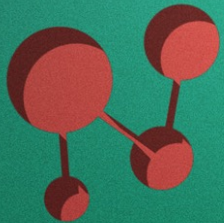
ANSWER: The obstacle to witnessing is less ignorance, more a resistant will.



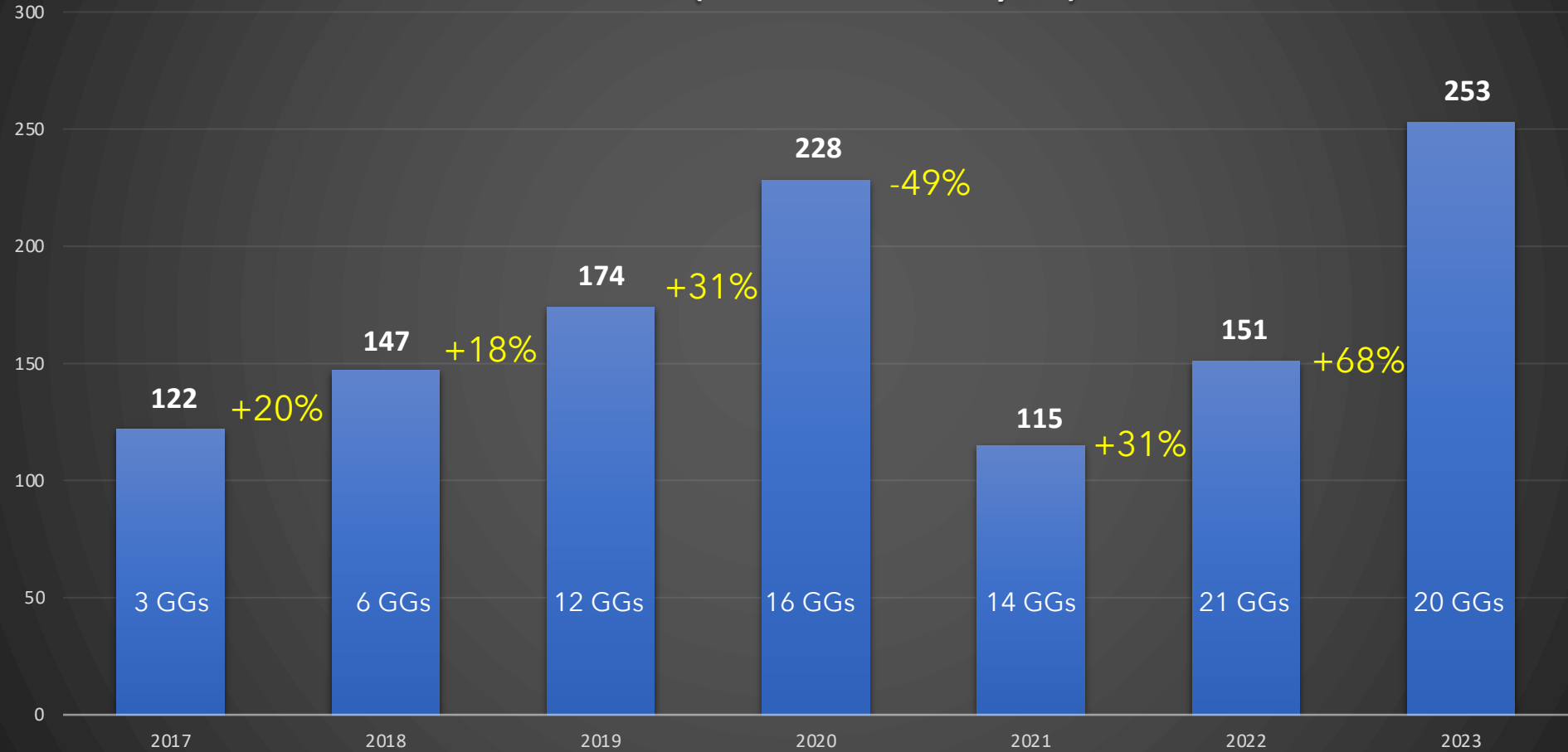


# THE SIMPLE PATH TO SMALL GROUPS

- **Materials**
- **Participants**
- **Communication**
- **Atmosphere & Rules**

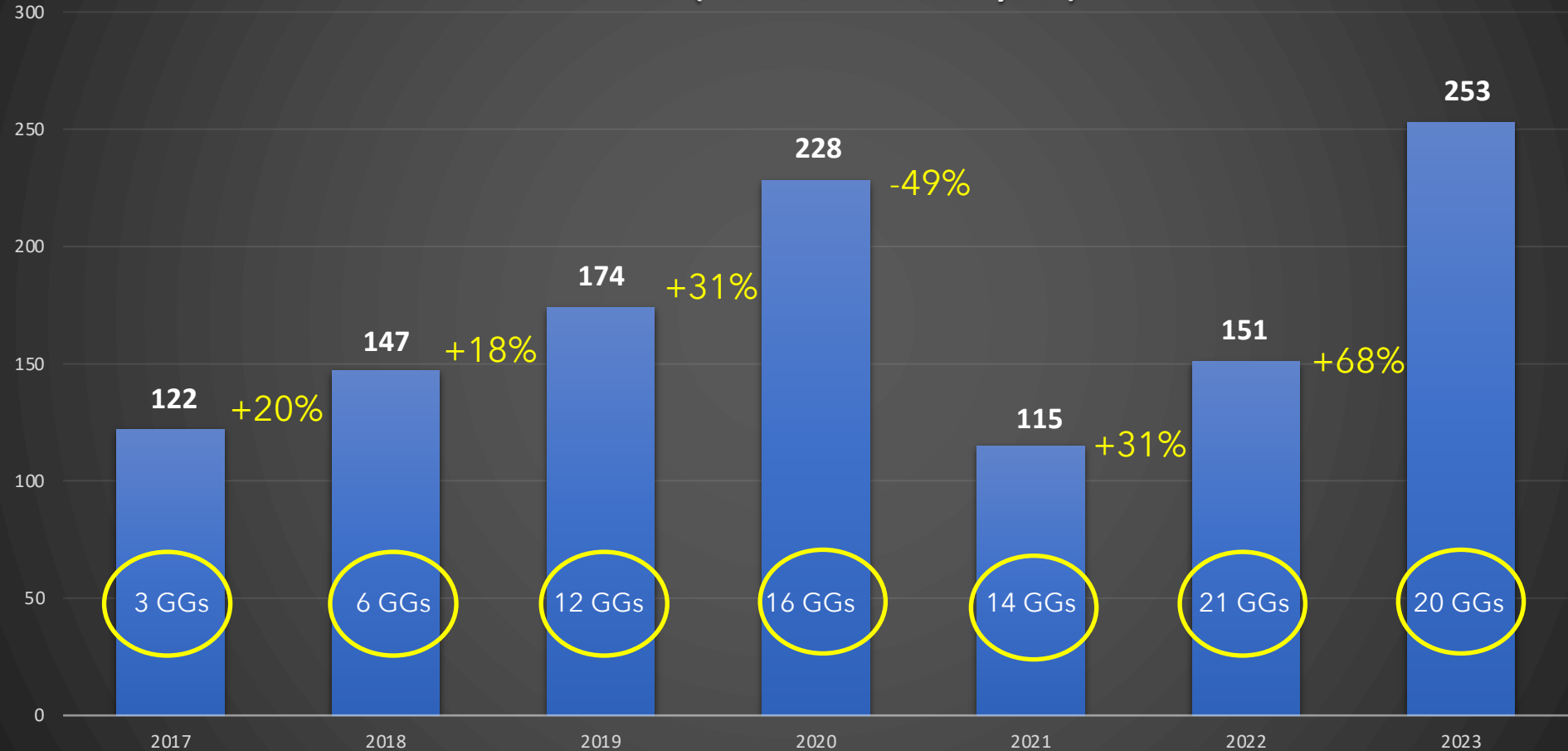


# St. Marcus Saturday 5:00pm Worship Attendance (start of calendar year)





# St. Marcus Saturday 5:00pm Worship Attendance (start of calendar year)



# 1) WHY?

- Peer-to-Peer Discipling is **COMMANDED**
- Peer-to-Peer Discipling is **HEALTHY NOT Doing**
- Peer-to-Peer Discipling is **PROHIBITIVE**

# 2) HOW?

- **Materials**
- **Participants**
- **Communication**
- **Atmosphere & Rules**



# Activate

An Entirely New Approach  
to Small Groups

**Nelson Searcy**  
and **Kerrick Thomas**



## LEADERSHIP AND CHURCH SIZE DYNAMICS HOW STRATEGY CHANGES WITH GROWTH

[ DR. TIMOTHY KELLER ]

A church's functional style, its strengths and weaknesses, and the roles of its lay and staff leaders will change dramatically as its size changes.

One of the most common reasons for pastoral leadership mistakes is blindness to the significance of church size. Size has an enormous impact on how a church functions. There is a "size culture" that profoundly affects how decisions are made, how relationships flow, how effectiveness is evaluated, and what ministers, staff, and lay leaders do.

We tend to think of the chief differences between churches mainly in denominational or theological terms, but that underestimates the impact of size on how a church operates. The difference between how churches of 100 and 1,000 function may be much greater than the difference between a Presbyterian and a Baptist church of the same size. The staff person who goes from a church of 50 to a church of 2,000 is in many ways making a far greater change than if he or she moved from one denomination to another.

A large church is not simply a bigger version of a small church. The difference in communication, community formation, and decision-making processes are so great that the leadership skills required in each are of almost completely different orders.

### SIZE CULTURES

Every church has a culture that goes with its size and which must be accepted. Most people tend to prefer a certain size culture, and unfortunately, many give their favorite size culture a moral status and treat other size

<https://seniorpastorcentral.com/wp-content/uploads/2016/11/Tim-Keller-Size-Dynamics.pdf>

### Pastor James Hein Content

Tools for better seeing the gospel of Jesus Christ

HOME ABOUT

#### Sermons

Posted on August 22, 2013 | Edit



Image

Leave a comment

#### Pastor James Hein's Blog

Posted on August 22, 2013 | Edit



Image

Leave a comment

#### New Member Study

Posted on August 22, 2013 | Edit



1) Faith Builders - Lesson One: The Scriptures

Click here to download PDF Lesson of FB - 1 - Scriptures

2) Faith Builders - Lesson Two: Reading The Bible

Click here to download PDF Lesson of FB - 2 - Reading The Bible

[pastorjamesheincontent.com](http://pastorjamesheincontent.com)  
[stmarcus.org](http://stmarcus.org) - sermons

# RESOURCES

Four stylized molecular structures, each consisting of five teal spheres connected by black lines, are positioned in the corners of the image. A large, faint teal circle is centered behind the main text.

# **SMALL GROUPS**

**The Most Underutilized Tool  
in WELS Ministry**