

Women's Ministry Conference

The Power of Partnerships

Kristi Meyer & Eric Schroeder





Introductions

Kristi Meyer

- Communications Coordinator
(St. John's, Wauwatosa, WI)
- Mathematics Professor
(Wisconsin Lutheran College)
- Women's Ministry Executive Team Member

Eric Schroeder

- Associate Pastor
(Bloomington Living Hope, MN)
- Discipleship Pastor / Lead Pastor
(St. John's, Wauwatosa, WI)

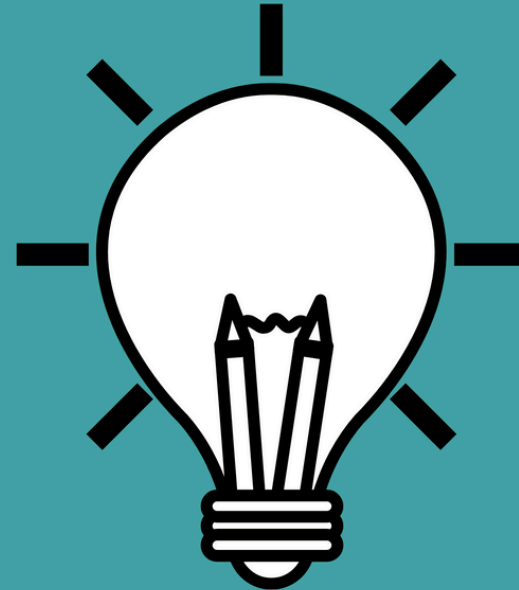
St. John's Tosa

- Size & demographics
- Congregational organization & culture

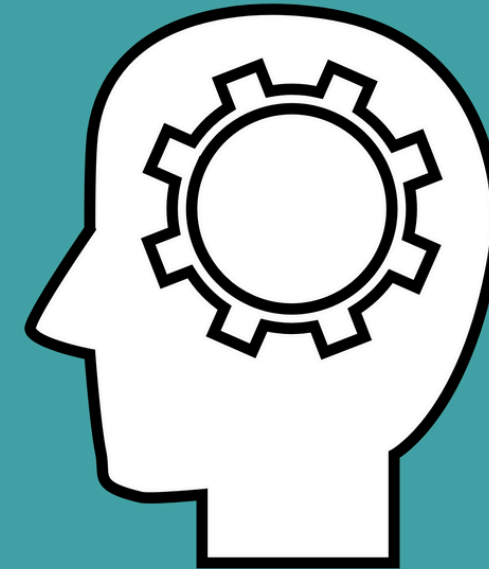
What?



So What?



Now What?



Outline

- Our Story
- Analysis of Our Partnership
- From Us to You...

Job Responsibilities



Lead pastor of a large congregation

- Time fillers
- Time drains



Communications coordinator

- History of the position
- From then to now

Turn and Talk

What might you be able to do to help take something off your pastor's plate?



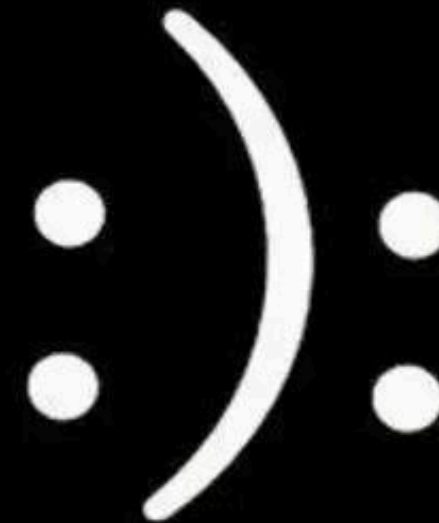


Successes & Struggles (part 1)

- Always made to feel my viewpoint is valued
- Given latitude to take the lead on projects and tasks
- Different priorities and timelines
- Learning to communicate differently

Successes & Struggles (part 2)

- Freedom to do more pastoral pastoring
- Growing pains in personality uniqueness
- Budget considerations
- Setting boundaries



Brainstorming / Self-Reflection

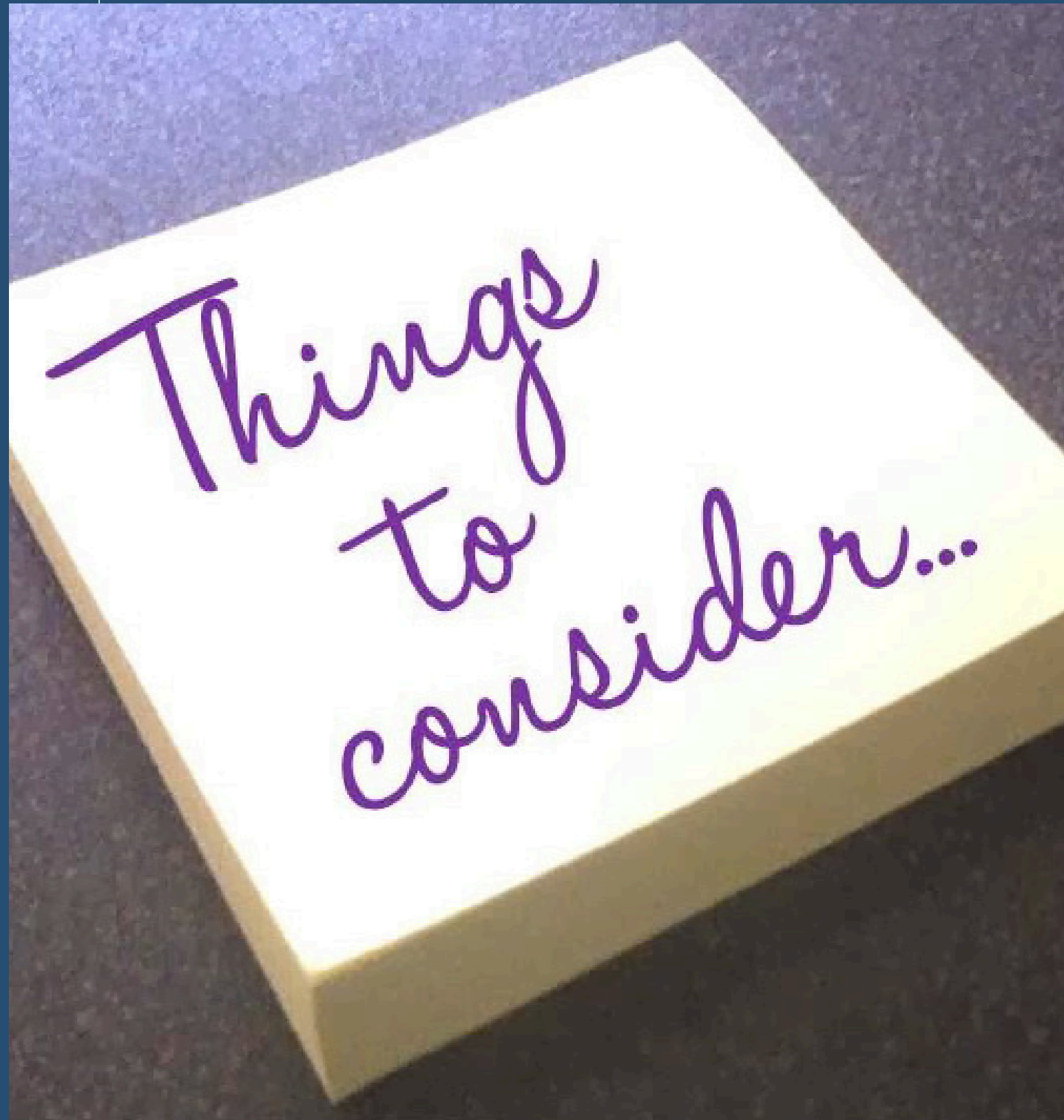
**In what ways might you work well with your pastor?
What are some potential struggles that might arise?**



What About You?

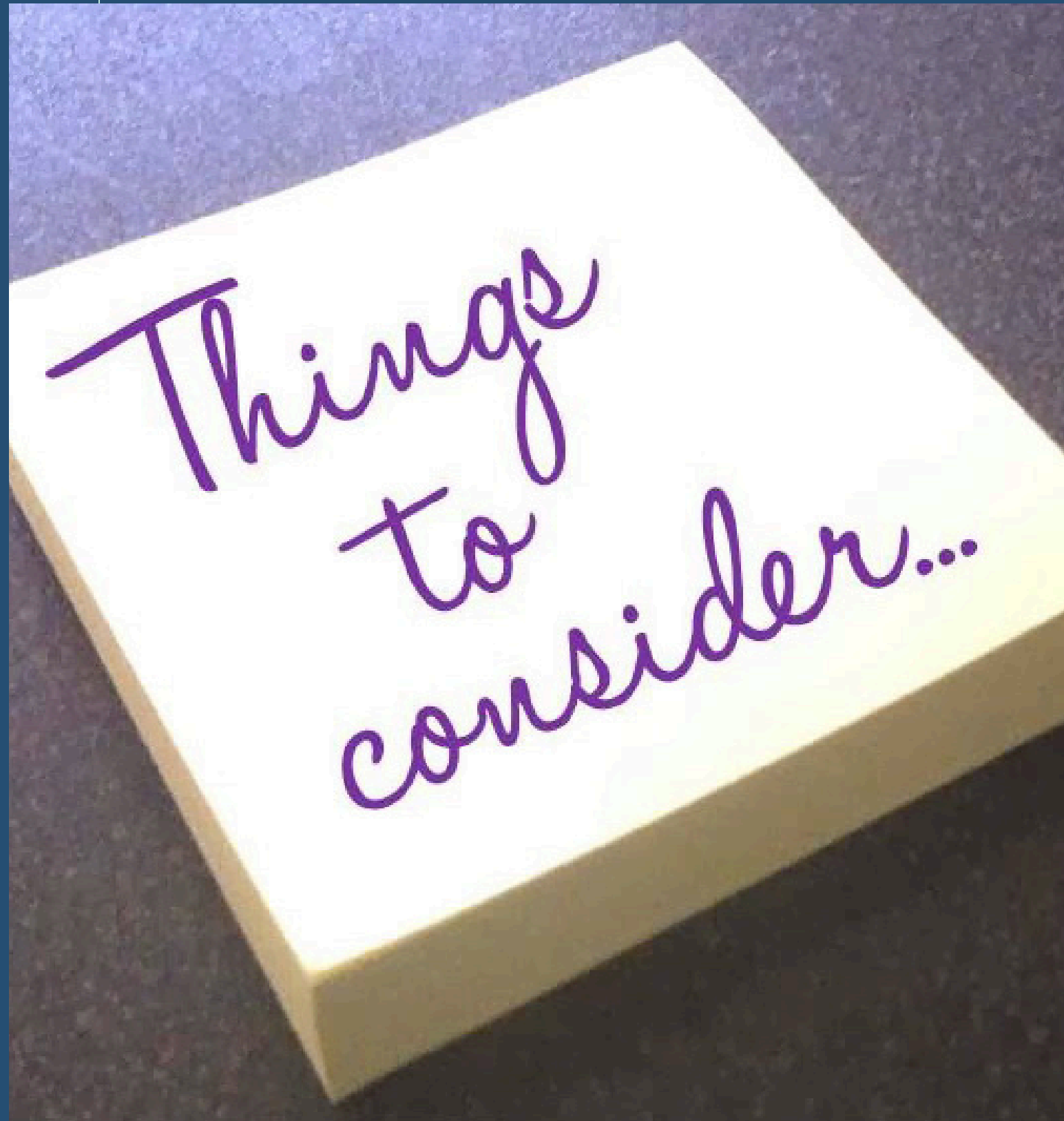
- Different level of involvement
- Different congregation dynamics
- BUT...





From the pastoral viewpoint:

- You're already partnering!
- Complementary vs. conflicting callings
- Finding the right balance



From the pastoral viewpoint:

- You're already partnering!
- Complementary vs. conflicting callings
- Finding the right balance

From the female viewpoint:

- Partnerships take work and time to develop
- Gender differences are real
- Three hundred things...

From the pastoral viewpoint:

- What did God make you especially good at?
- What needs & opportunities already exist?
- What might you make even better?



From the pastoral viewpoint:

- What did God make you especially good at?
- What needs & opportunities already exist?
- What might you make even better?

From the female viewpoint:

- Common Great Commission goals
- If you see a need, step up
- Ask!





Final thoughts are so, you know,
final. Let's call them closing words.

Craig Armstrong

Questions?

Kristi Meyer

kristi.meyer@sjtosa.org

Eric Schroeder

eric.schroeder@sjtosa.org